

Stacking 2/2 Directional Valve, ISO size 3 Solenoid Controlled, Seated Design Series SWR22..EA...-6

- 315 bar, 40 l/min
- With two-stage, solenoid controlled 2/2 cartridge valve, type WR22 ..EA5
- All ports rated to 315 bar
- Corrosion protection: body zinc-phosphated, exposed cartridge parts zinc-plated

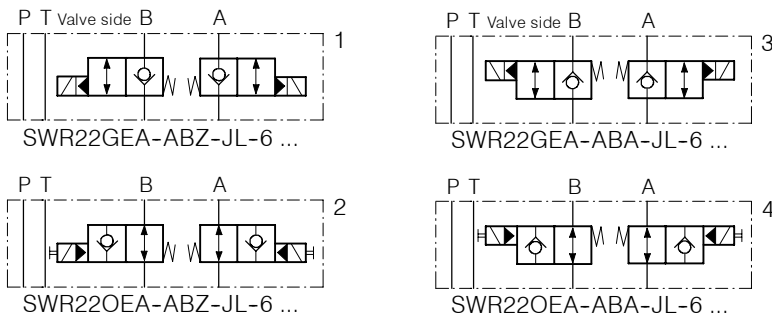
- With ISO 4401 / CETOP R35H size 3, NFPA D03, DIN 24 340 A6 interface

1. Description

Series SWR22 ...-6 stack valves are two-stage units, the pilot and main stages both being of seated design.

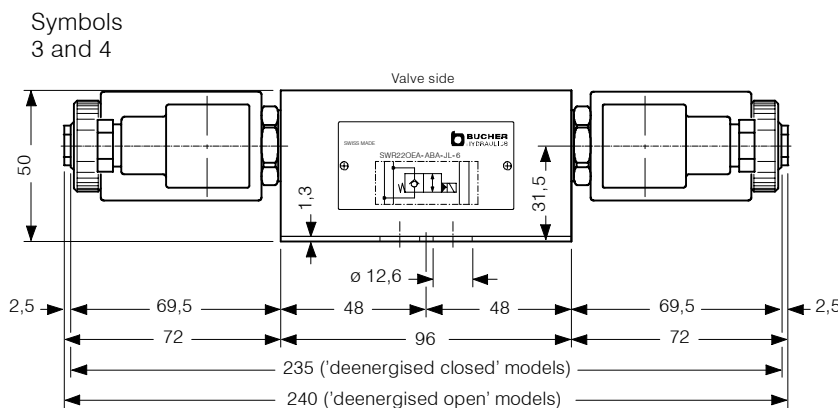
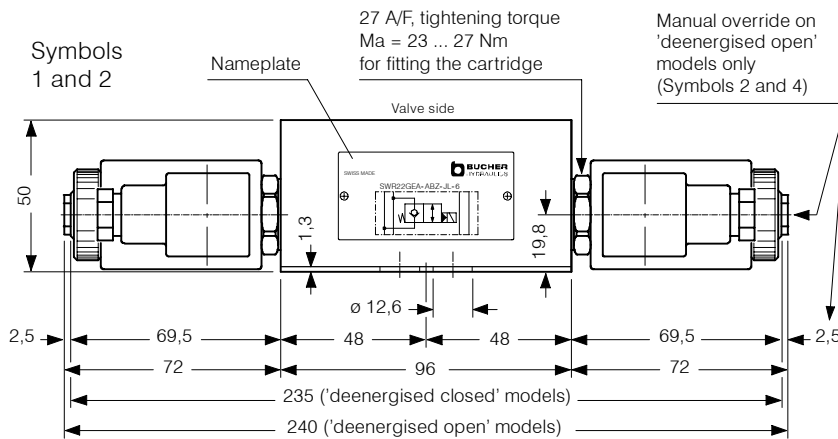
They are equipped with the 2/2 solenoid cartridge valve type WR22...EA5. The valve design features screw-in cartridges, thus ensuring straightforward, very user-friendly maintenance. Interface sealing is by means of a seal plate and 5 O-rings.

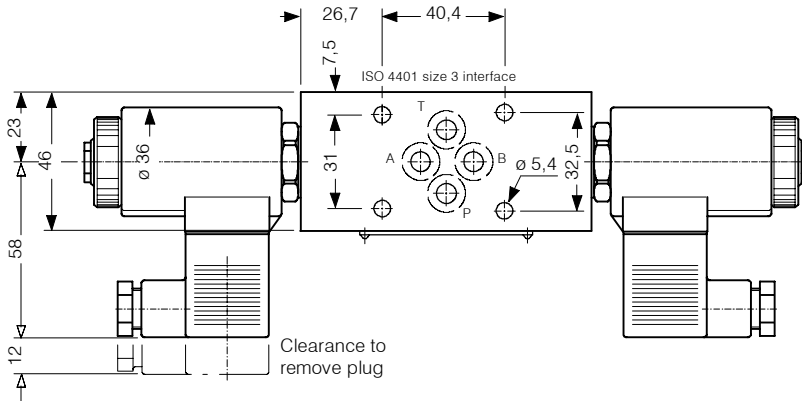
2. Symbols



By turning a valve upside down about its long axis, the 'Check IN' functions (symbols 1 and 2) become 'Check OUT' functions (symbols 3 and 4)

3. Dimensions

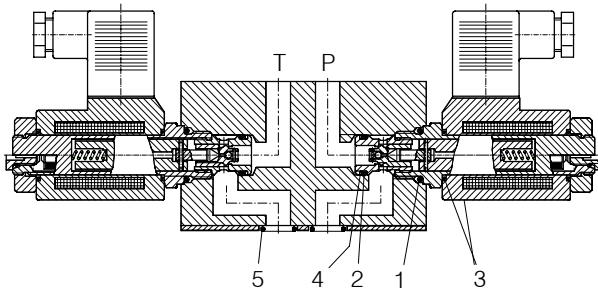




4. Schematic section

showing the relevant ports

Ex. SWR22GEA-ABA-JL-6 ...



Seal kit no. DS-310, comprising:

Itm.	Qty.	Description	Size
1	2	O-ring no. 017	Ø 17,17 x 1,78 N90
2	2	O-ring no. 014	Ø 12,42 x 1,78 N90
3	4	O-ring	Ø 16,00 x 2,00 Viton
4	2	Backup ring	Ø 15,9 / 13 x 1
5	4	O-ring no. 012	Ø 9,25 x 1,78 N90

5. Installation and servicing

All installation and servicing must be carried out with care, and by qualified personnel only. At installation, make sure that the valve interface aligns with the interface of the mating surface and

do not confuse the directional valve ('top') and manifold ('bottom') faces of the valve. When changing seals, the new seals should be thoroughly oiled or

greased before they are fitted. When fitting the cartridge, ensure that the seals are oiled or greased and use the specified tightening torque.

6. Ordering code

Ex.

S	WR22GEA	-	AB	A	-	JL	-	6	-	24 VDC
---	---------	---	----	---	---	----	---	---	---	--------

- S = stack-mounting valve
- WR22GEA = directional valve, deenergised closed
- WR22OEA = directional valve, deenergised open
- AB = function in A ⇒ A und B ⇒ B
- Z = check IN function
- A = check OUT function
- JL = stacking body type JL
- 6 = nominal size 6 mm
- (blank) = Nitrile seals (standard)
- V = Viton seals
- Special seals by arrangement
- Voltage and current plainly specified

7. Related data sheets

Old no.	New no.	
i - 00	400-P-010101-E	Table of interface equivalents
i - 31	400-P-030501-E	DIN 24 340 size A6 interface
W - 2.155	400-P-121120-E	2/2 Solenoid Cartridge Valve WR22..EA5

info.ch@bucherhydraulics.com

www.bucherhydraulics.com

© 2015 by Bucher Hydraulics AG Frutigen, CH-3714 Frutigen

All rights reserved.

Data is provided for the purpose of product description only, and must not be construed as warranted characteristics in the legal sense. The information does not relieve users from the duty of conducting their own evaluations and tests. Because the products are subject to continual improvement, we reserve the right to amend the product specifications contained in this catalogue.