

# Directional valve

## Bypass thermostat valve

$Q_{\max} = 31 \text{ gpm}$ ,  $p_{\max} = 700 \text{ psi}$

mechanically with thermostat element, integral relief function

Type series: WDTUVA-45-10...



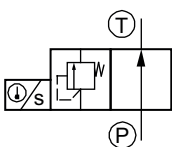
- Screw-in cartridge valve
- For cavity DU
- All external parts with zinc-nickel plating according to DIN EN ISO 19598
- Installation in threaded port body type GCUA
- Oil warms up rapidly (cold-start phase)
- Direct-mounted in coolers or manifold blocks
- Low head loss
- Choice of various pressure settings
- Very good reproducibility
- Extremely reliable
- Very stable operation
- Temperature-dependent bypass control

### Description

These direct acting bypass thermostat valves are size 10, temperature controlled, high performance screw-in valves with an M27×2 mounting thread. They are intended to be installed directly in coolers or line-mounting body. Depending on the temperature of the oil, they route the flow either straight to tank or through the cooler. When the oil is cold ( $< 45 \text{ °C}$ ), the connection P to T is open (bypass), which means that the flow is directed to tank with minimal headloss and the oil warms up rapidly. After the changeover temperature is reached ( $> 60 \text{ °C}$ ), the integral thermostat element

closes the connection P to T. The valve now directs the oil flow through the cooler. With the integral pressure-relief function, the bypass thermostat valve also safeguards the cooler by protecting it from any pressure peaks that may result from excessive flow rates. The maximum pressure is determined by the model that is selected. The valves are predominantly used in coolers in mobile as well as industrial applications. All external parts of the valves are zinc-nickel plated and are thus suitable for use in the harshest operating environments.

### Symbol



## Technical data

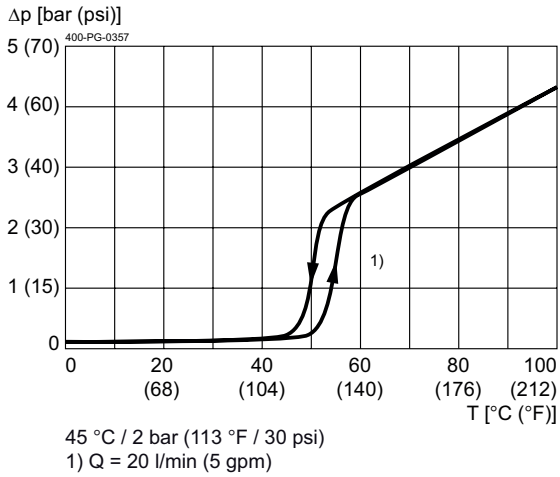
General characteristics	Description, value, unit
Sales category	project specific (on request)
Function group	Directional valve
Function	Bypass thermostat valve
Design	Screw-in cartridge valve
Controls	mechanically with thermostat element
Characteristic	integral relief function
Construction size	NG 10
Thread size	M27×2
Mounting attitude	unrestricted
Weight	0.10 lbs
Cavity acc. factory standard	For cavity DU
Tightening torque steel	44 ft-lbs
Tightening torque aluminium	44 ft-lbs
Tightening torque tolerance	± 10 %
Minimum ambient temperature	- 22 °F
Maximum ambient temperature	+ 212 °F
Surface protection	All external parts with zinc-nickel plating according to DIN EN ISO 19598
Sealing material	see ordering code

Hydraulic characteristics	Description, value, unit
Maximum operating pressure	700 psi
Maximum flow rate	31 gpm
Temperature for start of control action	113 °F
Flow direction	see symbol
Hydraulic fluid	HL and HLP mineral oil according to DIN 51 524; other fluids on request!
Minimum fluid temperature	- 22 °F
Maximum fluid temperature	+ 212 °F
Viscosity range	10 ... 650 mm <sup>2</sup> /s (cSt)
Recommended viscosity range	15 ... 250 mm <sup>2</sup> /s (cSt)
Minimum fluid cleanliness (cleanliness class according to ISO 4406:1999)	class 20/18/15

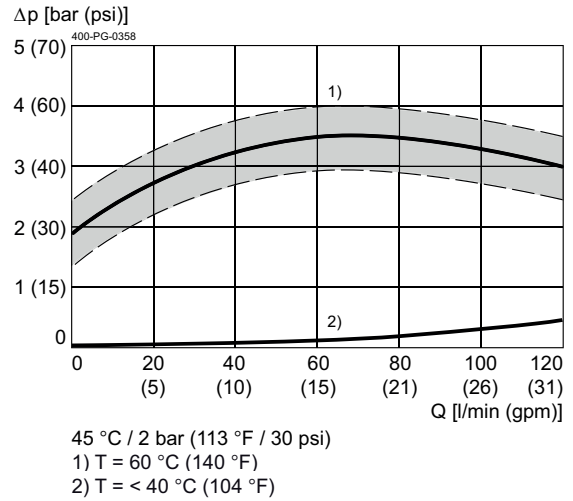
## Performance graphs

measured with oil viscosity 33.0 mm<sup>2</sup>/s (cSt)

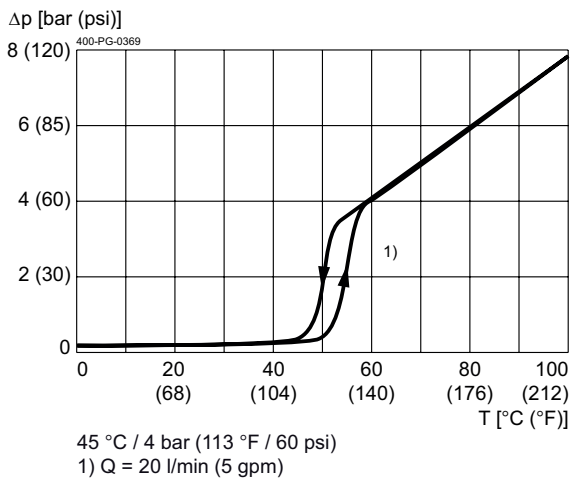
$\Delta p = f(T)$  Pressure drop-temperature



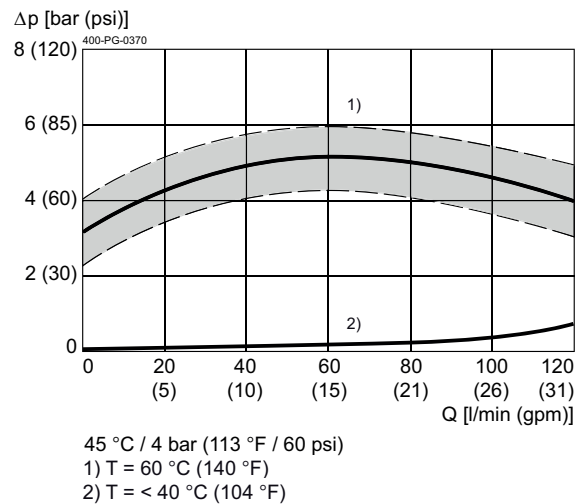
$\Delta p = f(Q)$  Pressure drop-flow rate characteristic



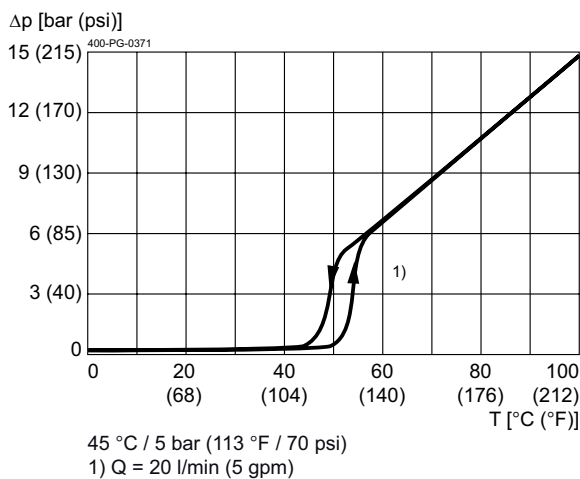
$\Delta p = f(T)$  Pressure drop-temperature



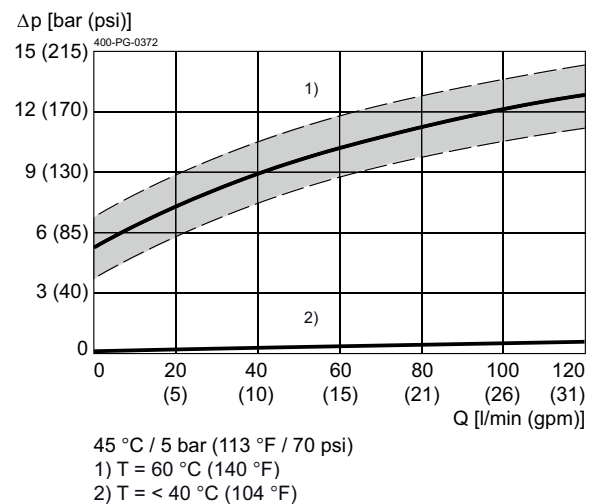
$\Delta p = f(Q)$  Pressure drop-flow rate characteristic



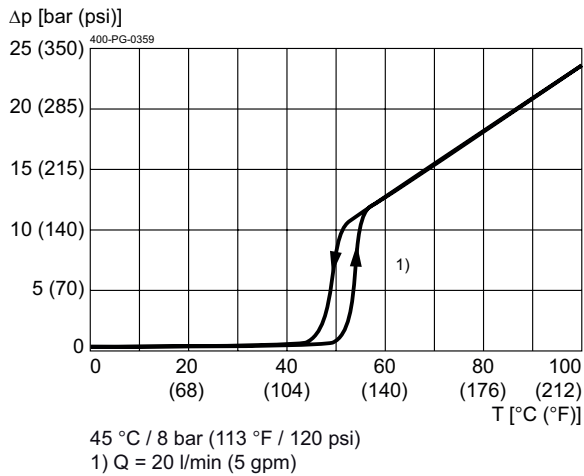
$\Delta p = f(T)$  Pressure drop-temperature



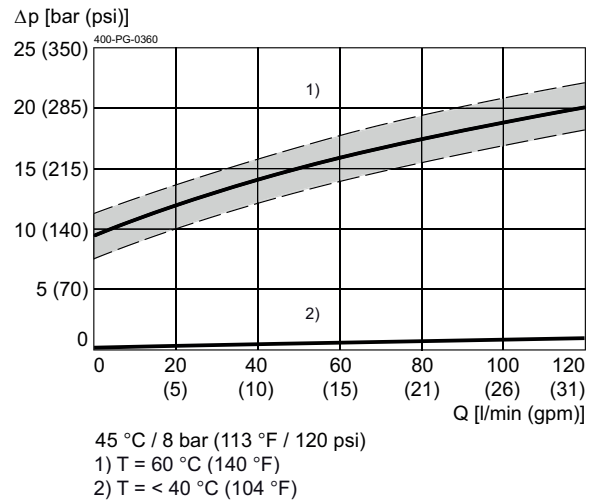
$\Delta p = f(Q)$  Pressure drop-flow rate characteristic



$\Delta p = f(T)$  Pressure drop-temperature

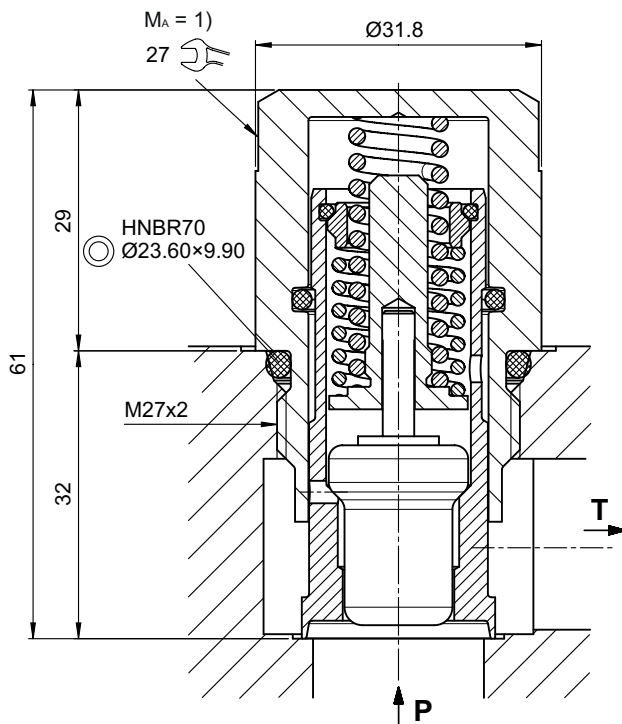


$\Delta p = f(Q)$  Pressure drop-flow rate characteristic



## Dimensions and sectional view

**Beispiel für die Masseinheit:**  
**Example for the dimensional units:**  
0.79 = 0.79 mm millimeter



## Installation information



### IMPORTANT!

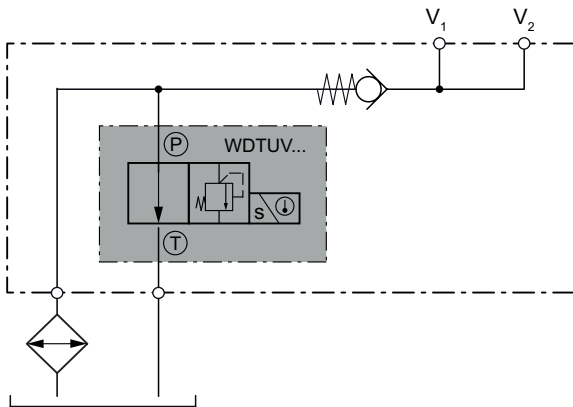
1) When fitting the screw-in cartridge valve, use the specified tightening torque. The value can be found in the chapter "Technical data".



### ATTENTION!

Only qualified personnel with mechanical skills may carry out any maintenance work. Generally, the only work that should ever be undertaken is to check, and possibly replace, the seals. When changing seals, oil or grease the new seals thoroughly before fitting them.

## Application examples



Manifold block with integral cooler-bypass thermostat valve

## Ordering code

Ex.	W	D	T	UV	A	-	45	-	80	-	10	-	1
W	=	directional valve, cartridge construction											
D	=	direct acting											
T	=	temperature-actuated (thermostat element)											
UV	=	pressure-relief function is incorporated											
A ... Q	=	standard model - see relevant data sheets											
Z ... R	=	special features - please consult BUCHER											
45	=	response temperature of thermostat ~ 45 °C											
20	=	pressure setting $p_N = 2$ bar											
40	=	pressure setting $p_N = 4$ bar											
50	=	pressure setting $p_N = 5$ bar											
80	=	pressure setting $p_N = 8$ bar											
...	=	for other pressure settings, please consult BUCHER											
10	=	size 10											
J	=	HNBR seals ( <b>standard</b> ) (special seals - please consult BUCHER)											
1 ... 9	=	design stage (omit when ordering)											



### IMPORTANT!

Only on request for larger projects.

## Related data sheets

Reference	Description
400-P-040011	Form tools
400-P-060241	Cavity DU
400-P-740251	Threaded port body GCUA

info.ch@bucherhydraulics.com

www.bucherhydraulics.com

© 2023 by Bucher Hydraulics AG Frutigen, 3714 Frutigen, Switzerland

All rights reserved.

Data is provided for the purpose of product description only, and must not be construed as warranted characteristics in the legal sense. The information does not relieve users from the duty of conducting their own evaluations and tests. Because the products are subject to continual improvement, we reserve the right to amend the product specifications contained in this catalogue.