

Pressure valve

Relief function

$Q_{\max} = 100 \text{ l/min}$, $p_{\max} = 350 \text{ bar}$
pilot operated, spool type, mechanically adjustable
Type series: DVPA-RV-1C-10...



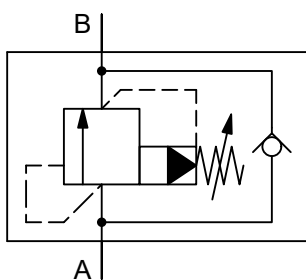
- Screw-in cartridge valve
- For cavity DC
- All external parts with zinc-nickel plating according to DIN EN ISO 19598
- Installation in threaded port body type DC-12
- Seated pilot stage
- Very stable operation
- Sensitive adjustment
- With built-in check valve

Description

These two-stage pressure-relief valves, series DVPA-RV-1C-..., are size 10, screw-in cartridge valves with a seated pilot stage and an M24×1.5 mounting thread. They are designed on the proven sliding-spool principle. The spring chamber is internally drained to the secondary connection. The secondary connection should be preferably drained to the tank without pressure. To obtain a reliable pressure setting over the entire pressure range, the overall pressure range is

divided into different pressure levels. These valves are mainly used in certain mobile and industrial applications to limit the system pressure. The pressure is set by means of an adjusting spindle. All external parts of the screw-in valves are zinc-nickel plated and are thus suitable for use in the harshest operating environments. For installation and further information, please refer to the section related data sheets.

Symbol



Technical data

General characteristics	Description, value, unit
Function group	Pressure valve
Function	Relief function
Design	Screw-in cartridge valve
Controls	mechanically adjustable
Characteristic	pilot operated, spool type
Construction size	NG 10
Thread size	M24×1,5
Mounting attitude	unrestricted
Weight	0.23 kg
Cavity acc. factory standard	For cavity DC
Tightening torque steel	65 Nm
Tightening torque aluminium	65 Nm
Tightening torque tolerance	± 10 %
Minimum ambient temperature	- 30 °C
Maximum ambient temperature	+ 80 °C
Surface protection	All external parts with zinc-nickel plating according to DIN EN ISO 19598
Sealing material	see ordering code
Seal kit order number	NBR: DS-216-N / FKM: DS-216-V

Hydraulic characteristics	Description, value, unit
Maximum operating pressure	350 bar
Maximum flow rate	100 l/min
Flow direction	see symbol
Hydraulic fluid	HL and HLP mineral oil according to DIN 51 524; other fluids on request!
Minimum fluid temperature	- 30 °C
Maximum fluid temperature	+ 80 °C
Viscosity range	10 ... 650 mm ² /s (cSt)
Recommended viscosity range	15 ... 250 mm ² /s (cSt)
Minimum fluid cleanliness (cleanliness class according to ISO 4406:1999)	class 20/18/15
Definition of cracking pressure for check valve	Via check valve = A to B ca. 6 bar (look to performance graph)
Pressure adjustment range	pressure range L: 1 turn = ca. 13 bar pressure range M: 1 turn = ca. 38 bar pressure range N: 1 turn = ca. 65 bar



ATTENTION!

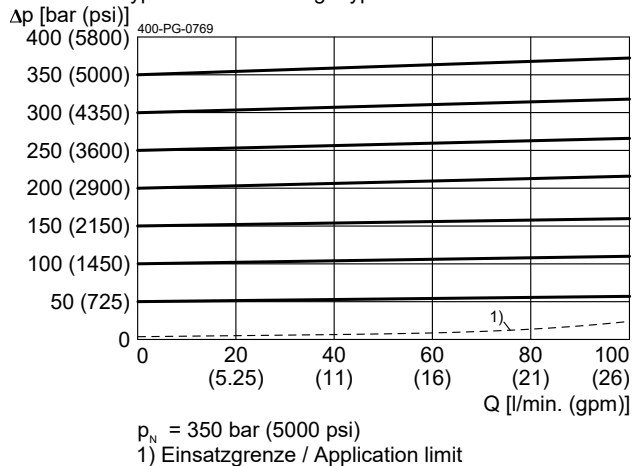
If there is pressure at the secondary connection, this is added to the set pressure value.

Performance graphs

measured with oil viscosity 33.0 mm²/s (cSt)

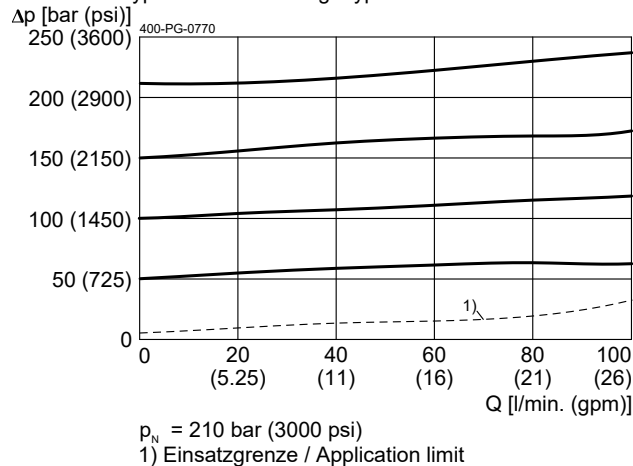
$\Delta p = f(Q)$ Pressure drop-flow rate characteristic

Druckstufe Typ N / Pressure range type N



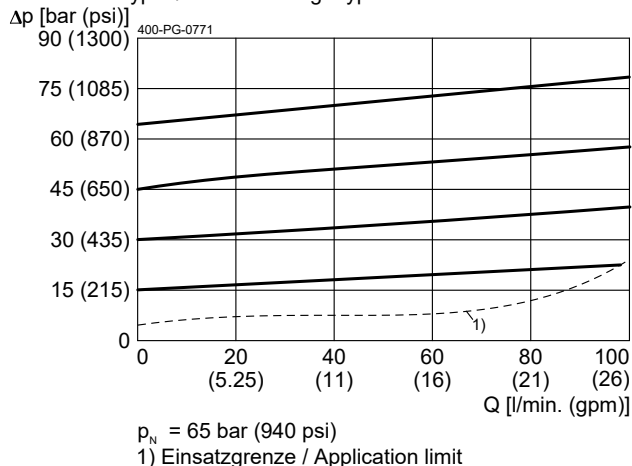
$\Delta p = f(Q)$ Pressure drop-flow rate characteristic

Druckstufe Typ M / Pressure range type M



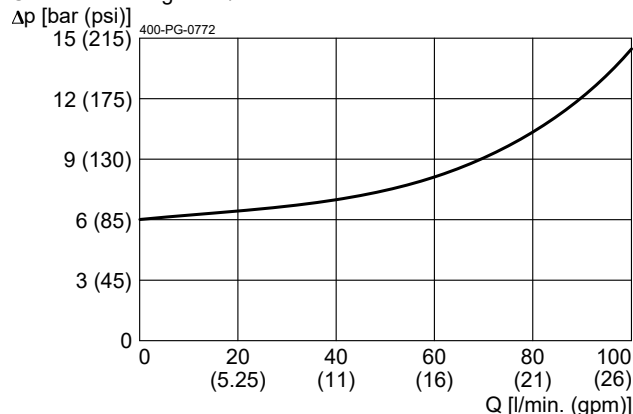
$\Delta p = f(Q)$ Pressure drop-flow rate characteristic

Druckstufe Typ L / Pressure range type L



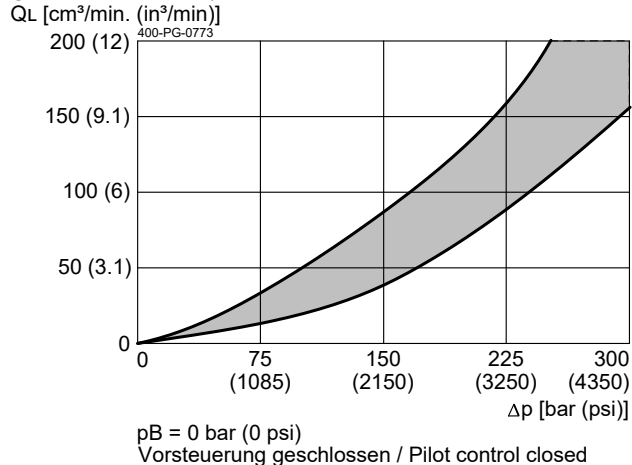
$\Delta p = f(Q)$ Pressure drop-flow rate characteristic

Über Rückschlagventil / Via check valve



$Q_L = f(Q; p)$ Leakage flow rate

Gemessen A nach B / Measured A to B

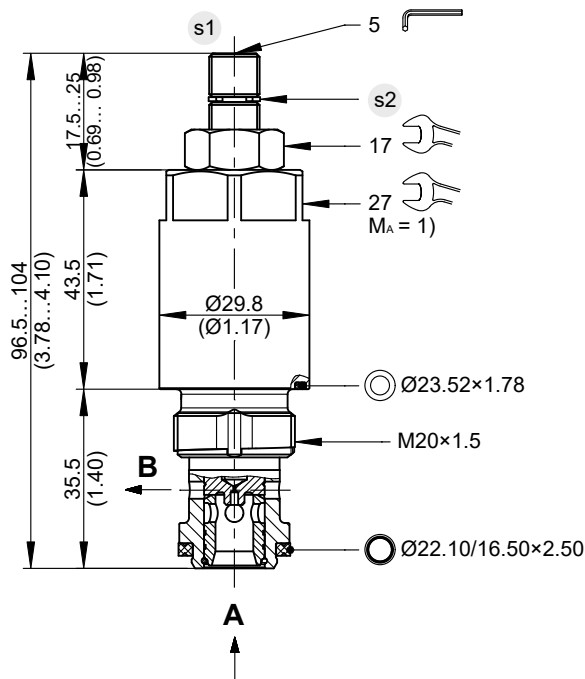


Dimensions and sectional view

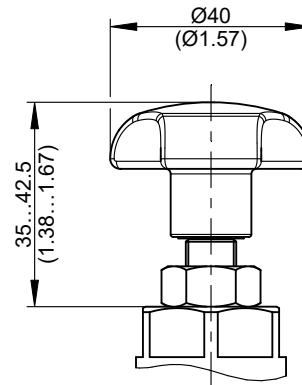
Beispiel für die Masseinheit:
Example for the dimensional units:

0.79 = 0.79 mm millimeter
(.031) = 0.031" inch

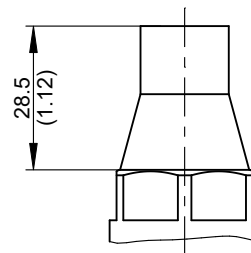
Version "S": Einstellschraube mit Innensechskant (Standard)
Version "S": adjustment screw with internal hexagon (standard)



Version "H": Einstellschraube mit Handrad
Version "H": adjustment screw with handknob



Einstellschraube mit Sicherungskappe
adjustment screw with tamper-proof cap



Installation information

NOTE!
1) When fitting the screw-in cartridge valve, use the specified tightening torque. The value can be found in the chapter "Technical data".

NOTE!
Set the required pressure with the adjusting screw (s1). After you have set the valve, lock the adjusting screw (s1) with the lock nut.

NOTE!
Valve settings can be sealed by fitting the tamper-proof cap. To fit the cap, the snap ring (s2) has to be removed. Subsequent adjustment is only possible by destroying the tamper-proof cap.

NOTE!
The seals are not available individually. The seal kit order number can be found in the chapter "Technical data".

ATTENTION!
Only qualified personnel with mechanical skills may carry out any maintenance work. Generally, the only work that should ever be undertaken is to check, and possibly replace, the seals. When changing seals, oil or grease the new seals thoroughly before fitting them.

Ordering code

	Ex.	D	V	P	A	-	RV	-	1	C	-	10	-	S	N	N	-	
D	=	pressure-control valve																
V	=	pilot operated																
P	=	cartridge design																
A ... Q	=	standard model according to valid data sheet																
Z ... R	=	special model (on request)																
RV	=	with built-in check valve																
1	=	Control type 1 (With internal spring space relief)																
C	=	cavity type DC																
10	=	nominal size 10																
S	=	adjustment screw with internal hexagon (standard)																
H	=	adjustment screw with hand knob																
N	=	pressure range 10...350 bar / 145...5000 psi (normal spring)																
M	=	pressure range 10...210 bar / 145...3000 psi (medium spring)																
L	=	pressure range 10...65 bar / 145...940 psi (light spring)																
N	=	NBR (nitril-butadien-rubber / BUNA) seals (standard)																
V	=	FKM (fluorocarbon rubber / VITON) seals (special seals on request)																
1 ... 9	=	technical design no. (omit by ordering)																



IMPORTANT!

When required, the tamper-proof cap (the adjustment seal) must be ordered separately in plain language.

Related data sheets

Reference	Description
400-P-040011	Form tools
400-P-060111	Cavity DC
400-P-740101	Threaded port body DC-12

info.ch@bucherhydraulics.com

www.bucherhydraulics.com

© 2025 by Bucher Hydraulics AG Frutigen, 3714 Frutigen, Switzerland

All rights reserved.

Data is provided for the purpose of product description only, and must not be construed as warranted characteristics in the legal sense. The information does not relieve users from the duty of conducting their own evaluations and tests. Because the products are subject to continual improvement, we reserve the right to amend the product specifications contained in this catalogue.