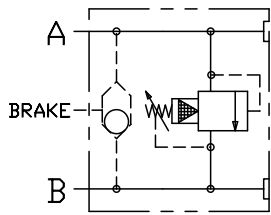
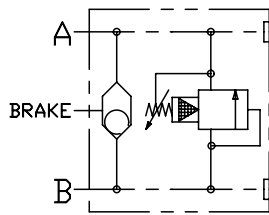


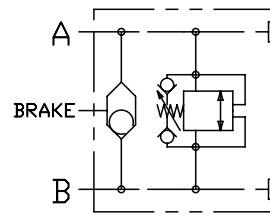
MOTOR MOUNT RELIEF VALVE



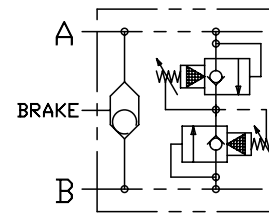
TYPE "A"  
"E"/SHUTTLE



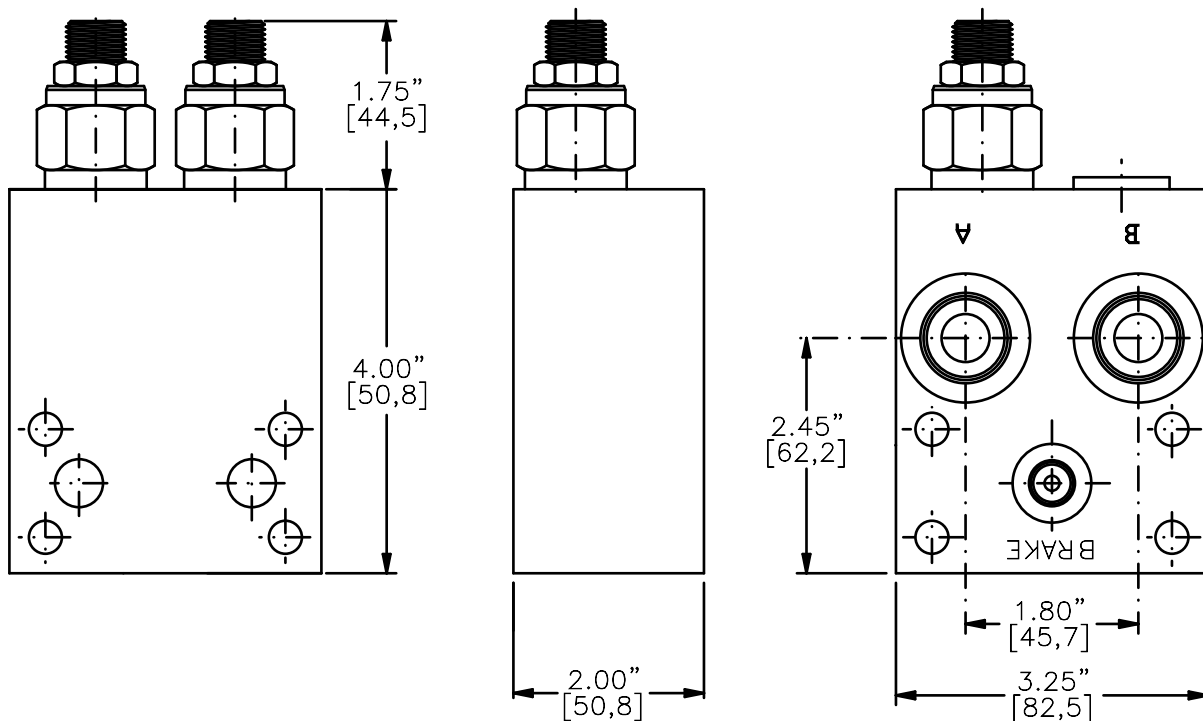
TYPE "B"  
"F"/SHUTTLE



TYPE "C"  
"G"/SHUTTLE



TYPE "D"  
"H"/SHUTTLE



**MMRV-10-X-X-X-10TA-XX-XX**

BASIC

SIZE  
10 = 7/8"-14UNF

SEALS  
N = BUNA "N"  
V = VITON

ADJUSTMENT  
C = CAPPED  
S = SCREW  
T = TAMPERPROOF

USE ON  
"D" & "H" ONLY

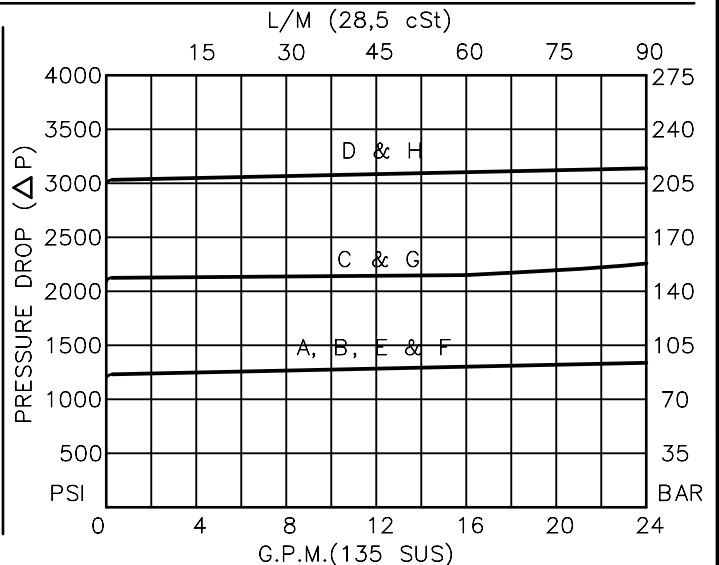
PRESSURE RANGE  
15 = 0 TO 1500 PSI  
30 = 0 TO 3000 PSI

PORTS  
10TA = SAE - #10

OTHER PORTS AVAILABLE  
UPON REQUEST

TYPE  
"A", "B", "C", "D", "E", "F", "G" & "H"  
(SEE OTHER SIDE PAGE 13-110.1)

FOR ADJUSTMENT CONTROL  
OPTIONS SEE PAGE 0-050.0



**MOTOR MOUNT RELIEF VALVE****DESCRIPTION**

THIS UNIT IS A CROSS PORT RELIEF VALVE TO MOUNT ON TO A LOW SPEED HIGH TORQUE HYDRAULIC MOTOR SUCH AS EATON, WHITE, PARKER (HPI & ROSS), DANFOSS, ETC. WITH MANIFOLD MOUNTING DIMENSIONS SPECIFIED ON PAGE 13-010.0

**OPERATIONS**

TYPE	PORT RELIEFS	CARTRIDGE VALVE
A	"A" TO "B"	RVPS-10-X-X-0-XX
B	"B" TO "A"	RVPS-10-X-X-0-XX
C	"A" TO "B" & "B" TO "A" SAME PRESSURE SETTING	RVBD-10-X-X-0-XX
D	"A" TO "B" & "B" TO "A" INDEPENDENT SETTINGS	RVPP-10-X-X-0-XX
E	"A" TO "B" (SAME AS "A")	WITH BRAKE SHUTTLE
F	"B" TO "A" (SAME AS "B")	WITH BRAKE SHUTTLE
G	"A" TO "B" & "B" TO "A" ( SAME AS "C" )	WITH BRAKE SHUTTLE
H	"A" TO "B" & "B" TO "A" ( SAME AS "D" )	WITH BRAKE SHUTTLE

**SPECIFICATIONS**

OPERATING PRESSURE: 3000 PSI [210 BAR].

OPERATING TEMPERATURE: -40° TO +250° F. [-40° TO +120° C.].

OPERATING MEDIA: ALL GENERAL PURPOSE HYDRAULIC FLUIDS.

BRAKE PORT WHEN REQUIRED IS SAE-#4 (7/16"-20 UNF THD.)

MATERIAL: ANODIZED ALUMINIUM ALLOY BODY.

OPTIONAL: PROVISIONS CAN BE MADE TO CLEAR THE MOUNTING BOLT ON THE SAE "A" FLANGE MOUNT MOTOR WITH MOUNTING HOLE ON THE SAME SIDE AS THE WORKING PORTS "A" AND "B".

[info.el@bucherhydraulics.com](mailto:info.el@bucherhydraulics.com)

[www.bucherhydraulics.com/commoncavity](http://www.bucherhydraulics.com/commoncavity)

© 2015 by Bucher Hydraulics, Inc., 2545 Northwest Parkway, Elgin, Illinois 60124, USA

All rights reserved.

Data is provided for the purpose of product description only, and must not be construed as warranted characteristics in the legal sense. The information does not relieve users from the duty of conducting their own evaluations and tests. Because the products are subject to continual improvement, we reserve the right to amend the product specifications contained in this catalogue.