

# Line-Mounting Body, Size SAE 10 / NG 8

Type: 10 Series - 2-Way

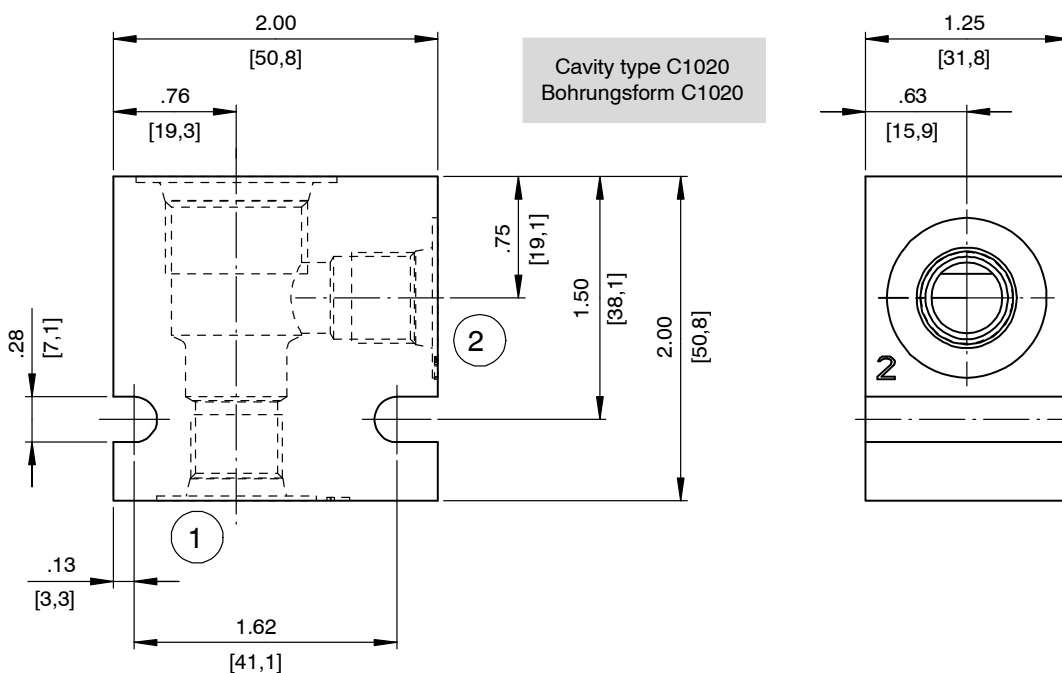
## 1 Technical data

Ordering code	Description	Material	Maximum operating pressure	Weight	Port 1	Port 2
06TA	30124	Aluminum	3000 psi [210 bar]	0.368 lbs [0.17 kg]	SAE-6	SAE-6
06TS	30130	Steel	5000 psi [350 bar]	1.073 lbs [0.49 kg]	SAE-6	SAE-6
08TA	30125	Aluminum	3000 psi [210 bar]	0.342 lbs [0.16 kg]	SAE-8	SAE-8
08TS	30131	Steel	5000 psi [350 bar]	0.999 lbs [0.45 kg]	SAE-8	SAE-8

Available on request for quantities > 100 pieces/year.

02BA	30122	Aluminum	3000 psi [210 bar]	0.377 lbs [0.17 kg]	G 1/4" -19 BSPP	G 1/4" -19 BSPP
02BS	30128	Steel	5000 psi [350 bar]	1.099 lbs [0.50 kg]	G 1/4" -19 BSPP	G 1/4" -19 BSPP
03BA	30123	Aluminum	3000 psi [210 bar]	0.362 lbs [0.16 kg]	G 3/8" -19 BSPP	G 3/8" -19 BSPP
03BS	30129	Steel	5000 psi [350 bar]	1.053 lbs [0.48 kg]	G 3/8" -19 BSPP	G 3/8" -19 BSPP

## 2 Dimensions & sectional view



### 3 Related data sheets

Reference	(Old no.)	Description
520-P-000120	(0-012.0)	Cavity type C1020

[info.el@bucherhydraulics.com](mailto:info.el@bucherhydraulics.com)

[www.bucherhydraulics.com/commoncavity](http://www.bucherhydraulics.com/commoncavity)

© 2018 by Bucher Hydraulics, Inc., 2545 Northwest Parkway, Elgin, Illinois 60124, USA

All rights reserved.

Data is provided for the purpose of product description only, and must not be construed as warranted characteristics in the legal sense. The information does not relieve users from the duty of conducting their own evaluations and tests. Because the products are subject to continual improvement, we reserve the right to amend the product specifications contained in this catalogue.

Classification: 430.395.-.-.-.